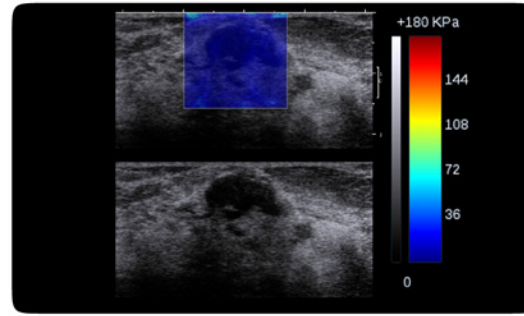
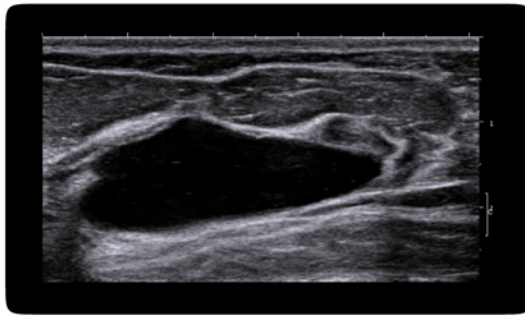


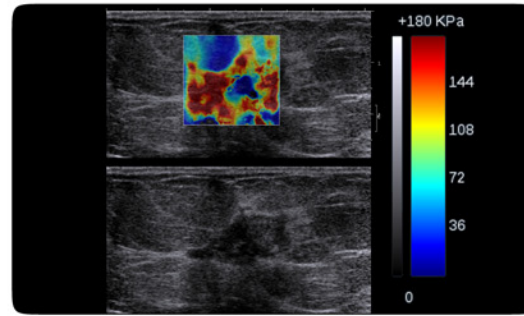
Healthy breast
 Normal glandular tissue



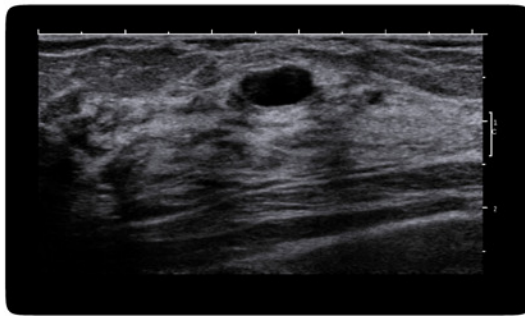
Breast Fibroadenoma
 BI-RADS® 3 lesion on mammography and ultrasound.
 E < 30 kPa



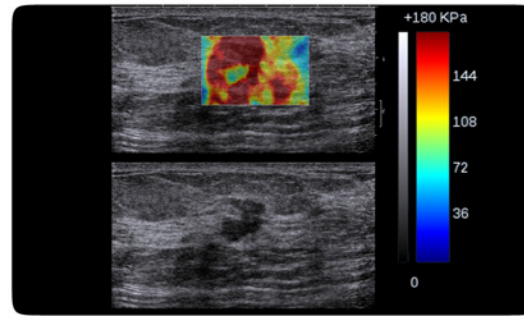
Large Breast Cyst
 BI-RADS® 2



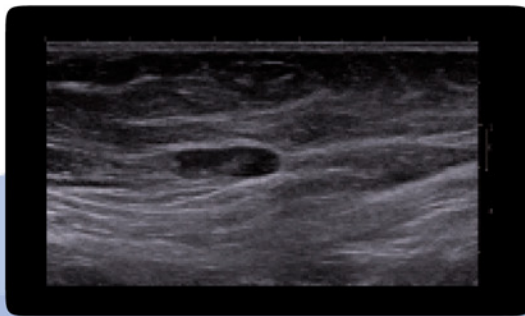
Invasive Ductal Carcinoma (Grade I)
 BI-RADS® 5
 Necrotic center
 E > 200 kPa on periphery
 E < 40 kPa at center



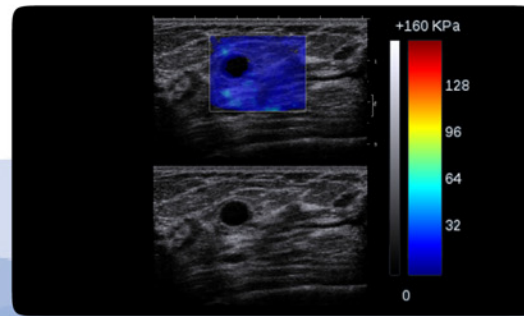
Breast Cyst
 Superficial breast cyst in dense breast tissue



Invasive Ductal Carcinoma (Grade I)
 BI-RADS® 5
 Partial necrosis at center
 E > 200 kPa on periphery
 E < 70 kPa at center



Patient with recurrence of Invasive Ductal Carcinoma (Grade III)
 This lymph node is considered suspicious



Breast Cyst
 BI-RADS® 2
 The cyst appears on the elastography map without a signal and without a quantitative value