

 **smart**[®]
3200T

Terason's Light-Weight,
Power-Packed Ultrasound System



The New Look of Ultrasound.

 **terason**[®]

usmart[®]
3200T



The New Look of Ultrasound

A fusion of cutting-edge technology and ease-of-use, the uSmart[®] 3200T brings you crystal-clear images, grab-and-go portability and an intuitive user interface that defines simplicity.

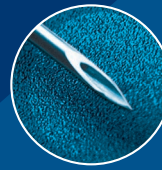
Developed by clinicians for clinicians, the newest member of the Terason ultrasound family affords quick and easy start-up, ideal for Emergency Medicine, Anesthesia and Critical Care in nearly any setting. With our exclusive Enhanced Needle Visualization (ENV), the uSmart 3200T is one powerful machine.

Gold Standard, Crystal-Clear Images You have to see it to believe it. First to patent color portable ultrasound. Since then, our razor-sharp image quality has earned a reputation for every detail, subtlety and nuance that others overlook. The AHVA LCD provides consistent image



The Best Tools For Your Practice

- Smart Gestures™
- Smart Case™
- uConnect™ Remote Capabilities
- Multi-Probe Connector Kit
- Solid State Hard Drive
- Fast Boot-up Time
- 15L4 Smart Mark™
- Smart Guide™



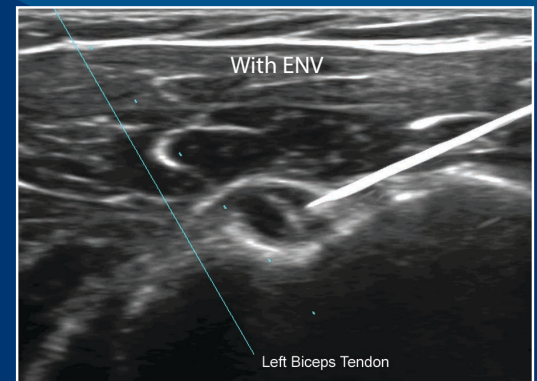
*Terason Introduces
the Next Generation*

Enhanced Needle Visualization (ENV)

As a leader in ultrasound, Terason is pleased to introduce ENV. This feature raises the bar for needle visualization.

- Frame rate stability
- One-button operation
- Works with all needle gauges
- 15L transducer solution
- Easy to use

. As an industry pioneer, Terason developed and was the reputation for excellence. The uSmart 3200T captures quality from multiple viewing angles.



Grab-and-Go Portability

As part of one of the most comprehensive product families in the industry, the uSmart 3200T weighs in at just under five pounds. The touch screen interface, small footprint and space-saving power dock can go anywhere quickly and easily. It's ready when you are!

The Terason Commitment

We realize the commitment you make to your patients, and we stand behind every customer. From initial training and online support, to our easy upgradeability, you can count on Terason to partner with you, building your trust, bolstering your efficiency and keeping your investment at the forefront of technology for years to come.

Terason's uSmart Technology

We developed our first signal-processing technology decades ago. Our crystal-clear image quality is among the best in the industry, and our exclusive features set the standard of excellence for quality, flexibility and productivity.

The Terason uSmart 3200T is an indispensable tool for point-of-care applications such as:

- Anesthesia
- Breast
- Critical Care
- Emergency Medicine
- Musculoskeletal
- Phlebology
- Vascular Access

For more information visit
www.terason.com

uSmart 3200T Ultrasound System Specifications

Imaging Modes

- 2D (B-Mode)
- M-Mode
- Color Doppler
- Pulsed Wave Doppler
- Power Doppler
- Directional Power Doppler
- Continuous Wave Doppler
- Tissue Doppler
- Tissue Harmonic Imaging

Imaging Features

- Enhanced Needle Visualization (ENV)
- TeraVision™ II
- OmniBeam™
- Dynamic Depth Resolution (DDR™)
- TeraZoom™
- Trapezoid
- Triplex/Duplex (Simultaneous/Non-Simultaneous)
- Split Screen
- Full Screen
- Auto Optimization
- 2D Beam Steering
- Application-Specific Presets
- Post Processing

System Features

- Touch Screen with Smart Gestures™
- Smart Case™ (Optional)
- 11.5" Backlit High-Resolution LCD with Advanced Hyper Viewing Angle (AHVA) (Anti-Glare Available)
- 128 GB Solid State Drive (SSD)
- Still Frame Image Export (BMP, JPEG)
- Dynamic Clip Export (AVI)
- DICOM 3.0 Compliant
- uConnect™ Remote Capability

- USB 3.0 Port
- Ethernet Port
- HDMI Port
- SD Memory Card Slot
- Wireless and Bluetooth
- Stereo Speakers
- Headphone Jack
- Integrated Battery and DC Input
- Built-In Camera
- Cold Boot-Up Time: < 28 Seconds
- Smart Mark™
- Smart Guide™

Measurement Packages

- Cardiology
- OB
- Vascular

Operating System

- Windows® 7

Physical Specifications

System Dimensions:

- Height: 8.82" / 224 mm
9.76" / 248 mm with Dock
- Width: 12.64" / 321 mm
- Depth: 1.26" / 32 mm
2.95" / 75 mm with Dock

System Weight: 4.5 lb / 2.04 kg

Docking Station Weight: 1.5 lb / 0.68 kg

Docking Station

- Adjustable Handle
- Multi-Position Stand
- 3 USB 3.0 Ports
- Ethernet Port
- DC Input
- Locking Mechanism

Mobile Cart

- Multi-Probe Connector Kit (Optional)
- 3 Transducer Holders
- 1 Active Probe Holder
- Thin, Sleek Body Style
- Mobile Design
- 4-Wheel Steering for Excellent Mobility
- 4 Locking Wheels
- Shelf with Handle and Removable Gel Holder
- On-Cart Storage Basket
- Transducer Connector Holders with Cable Management Hooks

Physical Specifications:

- Weight: 37 lb / 16.78 kg
- Work Surface Height: 38" / 96.52 cm
- Height: 52" / 132.08 cm
- Base Diameter: 20" x 20" /
50.80 cm x 50.80 cm



Terason Division • Teratech Corporation
77 Terrace Hall Avenue, Burlington, MA 01803 • 1-866-TERASON • 781-270-4143 • www.terason.com

CE 0413

©2014 Teratech Corporation. All rights reserved.

Terason and uSmart are registered trademarks of Teratech Corporation. OmniBeam, TeraZoom, TeraVision, DDR, uConnect, Smart Gestures, Smart Mark, Smart Guide and Smart Case are trademarks of Teratech Corporation. Windows is a registered trademark of Microsoft Corporation. 16-3267

REV.09.07-14