

SonixTOUCH

for *Breast* Imaging

with **SonixGPS**
Guidance Positioning System

A Revolution in Needle Guidance for Breast Imaging

Breast imaging requires high quality images for easy lesion assessment and SonixTOUCH for Breast Imaging delivers.

Advanced features such as our revolutionary SonixGPS needle guidance technology and Elastography will help you to quickly identify lesions and improve your biopsy core samples.



A user interface customized for breast imaging

SonixTOUCH Breast Imaging includes a user interface that is specifically designed for your clinical needs.



Image Quality

SonixTOUCH Breast Imaging provides premium image quality using a wide array of linear broadband transducers.

Elastography Imaging

Elastography imaging is a new technique that can measure tissue stiffness. A color coded map and pressure gauge improve image capture and assessment.

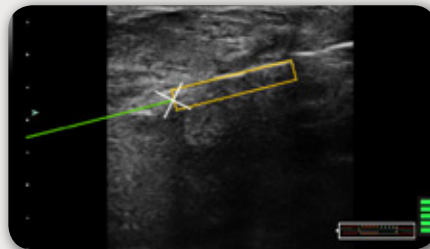
Ease of Use

Our Breast Imaging presets coupled with our touch screen user interface will allow faster start-to-scan times for breast radiologist.

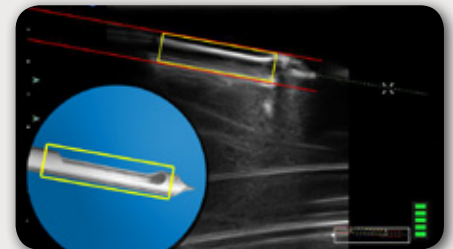


SonixGPS 3D Guidance Positioning System

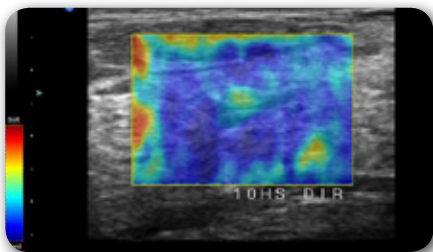
The SonixGPS is a revolutionary advancement in needle visualization. Now you can accurately keep track of the distal tip and access your target from any angle. Available as an option on the SonixTOUCH Breast Imaging, you can increase your effectiveness with biopsies and increase the comfort of your patients.



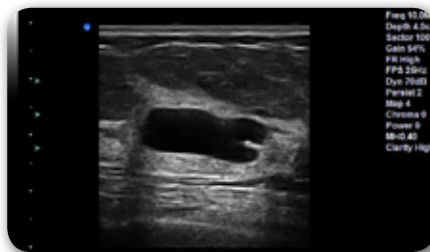
Needle Guidance – On-screen markers will let you know the precise location of your needle tip.



Biopsy Needles – Help increase the accuracy of biopsies by better visualizing your needle's aperture.



Elastography – Shows variations in tissue consistency by use of color coded maps.



Cyst – Advanced imaging will help you define edges and increase image quality.



Breast Mass – Speckle reduction will help minimum noise giving you a clearer picture.



For more information call 1-866-437-9508 or visit www.ultrasonix.com/breast

© Ultrasonix Medical Corporation — All rights reserved. 00.050.047 Rev. B