

SonixTOUCH ENDO

Designed with the Endocrinologist in Mind

The easy-to-use touch screen interface is streamlined to display only the functions needed for an endocrinology exam. Superior image quality, sensitive color doppler and advanced imaging modes such as elastography dramatically enhance the diagnostic process.



A user interface customized for endocrinology.

SonixTOUCH Endo is specifically designed for your clinical needs. We have simplified the user interface by displaying only the buttons needed for the task at hand.



Advanced Imaging Modes

The SonixTOUCH provides imaging modes endocrinologists require for diagnostic efficiency and accuracy. Additional and advanced modes such as Color Doppler and Elastography can be added at anytime after the purchase of the system.

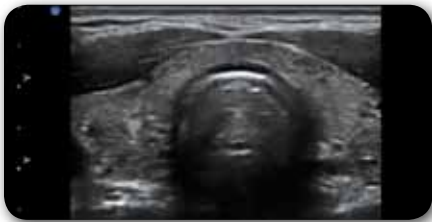
Results Reporting

A complete report package including all measurements, thyroid tissue and nodule diagnostic characteristics with attached images is part of the SonixTOUCH ENDO configuration.

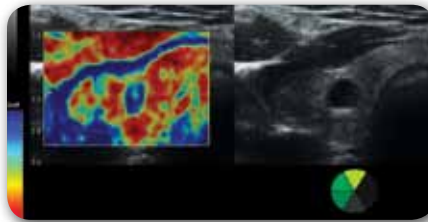
Premium Image Quality

Acquire superior quality images with imaging modes such as spatial compounding and speckle reducing clarity. Trapezoidal imaging provides an image of a greater anatomical region and Beam Steer improves the sound beam to needle angle in order to enhance the visualization of biopsy needles.

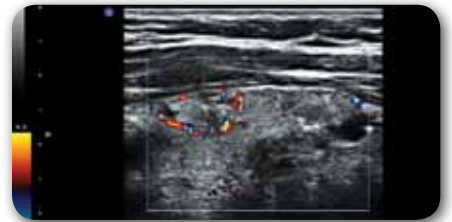
Clinical Images



Spatial Compounding - Images are constructed using ultrasound transmitted and received at multiple angles to enhance thyroid tissue, nodule edge definition and characteristics.

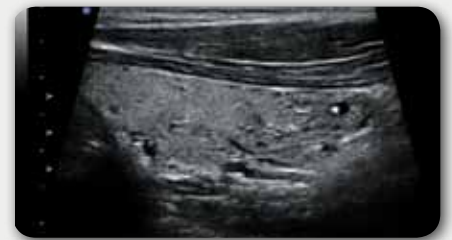
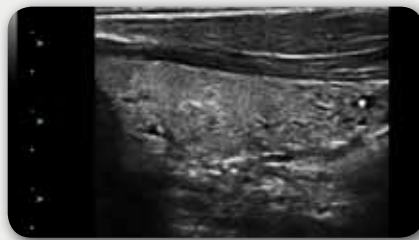


Elastography - A color image displays the relative hardness of tissues which helps determine the best diagnostic approach for the evaluation of specific nodules.



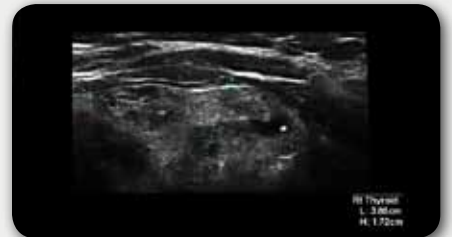
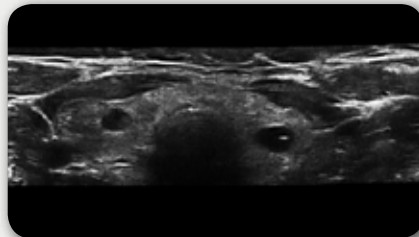
Color Doppler - Nodule vascularity location and relative flow quantity are useful diagnostic parameters.

Advanced Trapezoidal Scanning



Enlarged thyroids are difficult to image and measure accurately in a rectangular mode. The trapezoidal imaging mode provides a larger anatomical image region enhancing ease of visualization and measurement accuracy.

Panoramic Scanning



Provides unlimited, complete visualization of an enlarged thyroid while maintaining the capability of performing accurate measurements. This extended field of view also aids in the documentation of lymph node location in relationship to other anatomic structures.

For more information call 1-866-437-9508 or visit www.ultrasonix.com/endo

© Ultrasonix Medical Corporation — All rights reserved. 00.050.092 Rev. A

