

# SonixTOUCH IVF

The Difference is in the Details

With its premium-level image quality and advanced imaging modes, SonixTOUCH IVF is specifically designed for the unique requirements of today's Reproductive Endocrinologist. Optimize your workflow and seamlessly interface with many of today's popular fertility specific Electronic Medical Records (EMR).



# A user interface customized for IVF

SonixTOUCH IVF's user interface is specially designed for your clinical needs. We have simplified the user interface by displaying only the buttons needed for the task at hand.



## Improved Workflow

Enhanced workflow is critical in today's fast paced clinical environment. SonixTOUCH streamlines your patient's data and image transmission to your EMR, network or removable device.

## Choose your configuration

SonixTOUCH IVF starts as a black and white system. You choose the features you want: Color and Power Doppler, Pulsed Wave Doppler, and 3D Endovaginal.

## Seamless Connectivity

SonixTOUCH is DICOM compliant and seamlessly connects to several of today's more popular fertility specific EMR's.

## Transducers



### 4DEC9-5/10

Bandwidth: 9-5 Mhz  
Field of View: 145°  
Array Length: 10mm  
Needle Guide: Yes



### C5-2/60

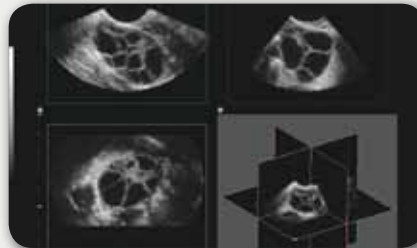
Bandwidth: 5-2 Mhz  
Field of View: 86°  
Array Length: 60mm  
Needle Guide: Yes



### EC9-5/10

Bandwidth: 9-5 Mhz  
Field of View: 165°  
Array Length: 10mm  
Needle Guide: Yes

## Multi-planar Ultrasound Imaging



SonixTOUCH provides high resolution imaging in multiple 3D planes that can aid in follicular assessment.

## Auto Follicle Measurement



With a touch of your finger, the Auto Follicle Measurement Tool can help reduce your measurement time by over 50%



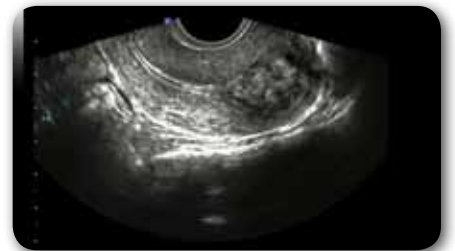
**Gestational Sac** – Excellent image details of early pregnancy development.



**Ovarian Endometrioma** – Excellent visualization of pathology associated with fertility problems.



**Ovarian Measurements** – Easily measure and record patient data with our touch screen interface and onboard storage.



**Fibroid in Endometrial Cavity** – Visualize obstructions that can interfere with an embryo transfer or implantation.



For more information call 1-866-437-9508 or visit [www.ultrasonix.com/ivf](http://www.ultrasonix.com/ivf)

© Ultrasonix Medical Corporation — All rights reserved. 00.050.050 Rev. D